



# Leveraging Local Data for Economic Mobility





# Housekeeping

- ☐ **Rename Yourself To Include Your Name And Your Municipality/Organization**
- ☐ **Be Actively Engaged And Willing To Learn**
- ☐ **Join Us From A Quiet Space**
- ☐ **Grab A Snack, Water, Coffee – Settle In!**
- ☐ **If You Have Any Questions, Use The Chat Box!**



# Today's Agenda



## Housekeeping and Agenda

Outline our time together and what you'll be able to take away from this conversation.



## Upward Mobility Framework Workshop

Learn more about the Upward Mobility Framework and how you can use it in your community.



## Wrap Up and Next Steps

Find out more about future economic mobility activities and engagements for the near future.





# Key Takeaways



## Define the Issues

Knowledge on 24 key metrics over 5 key pillars to shape your community's economic mobility picture.



## Metrics and Solutions

Understand how the Upward Mobility Framework provides trackable, reliable, and consistent data on evidence-based metrics.



## Find Other Data

Identify other key data points and sources that you can use in your community.



## Layered Problems, Layered Solutions

The Upward Mobility Framework and other resources provide mechanisms to simplify and distill your community needs and potential solutions.



NLC



# Who's On the Webinar?



**Justin Chu**

Program Manager,  
Economic Opportunity and  
Financial Empowerment  
*National League of Cities*



**Tina Chelidze**

Policy Associate  
*Urban Institute*



**Jesús Guzmán**

Policy Program Associate  
*Urban Institute*



OCTOBER 22, 2024

# Leveraging Economic Mobility Data: Using the Upward Mobility Framework

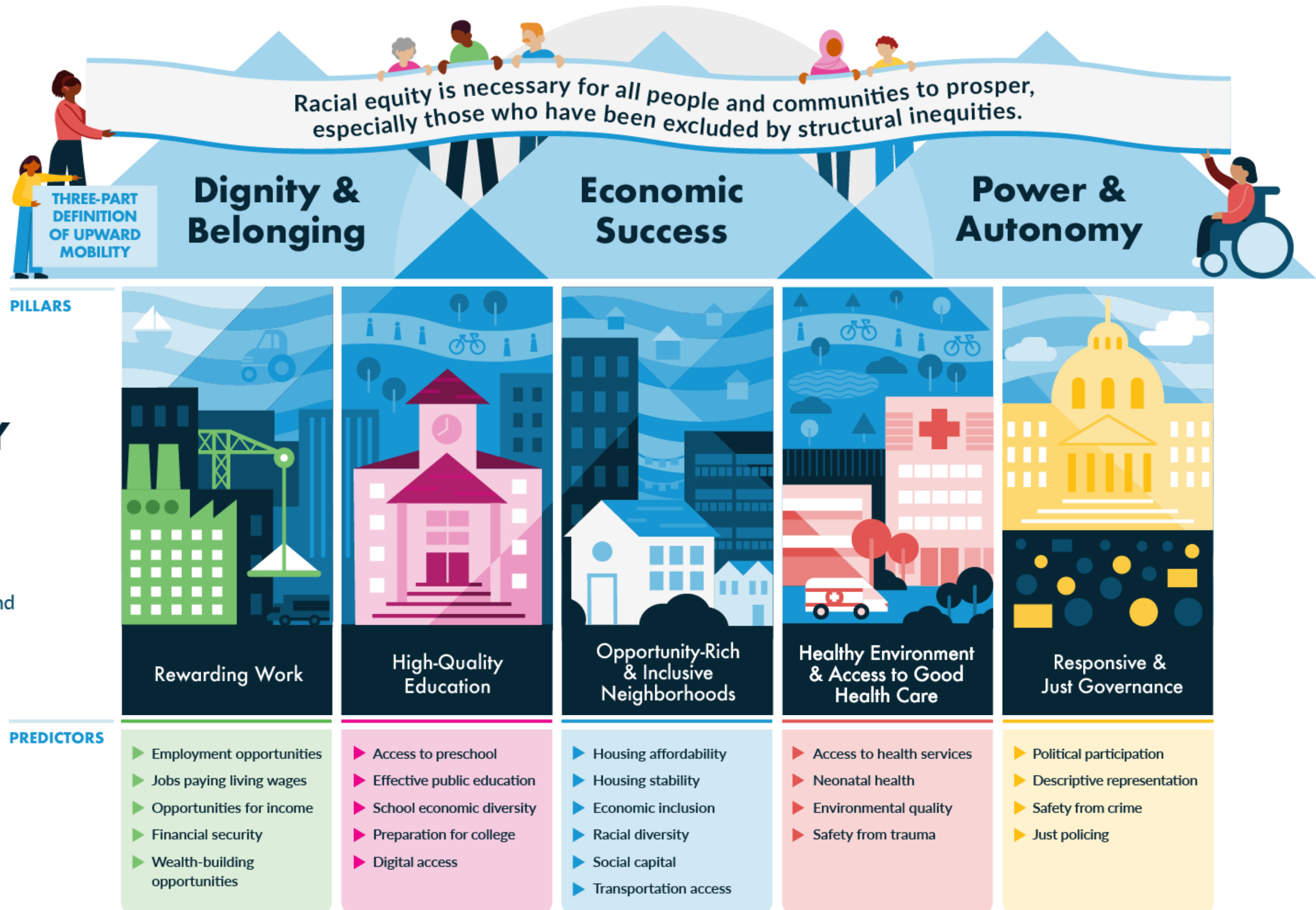


Upward Mobility Initiative



# UPWARD MOBILITY FRAMEWORK

The Urban Institute's evidence-based foundation for community efforts to expand prosperity and narrow racial inequities.





**PILLARS**



Rewarding Work

**PREDICTORS**

- ▶ Employment opportunities
- ▶ Jobs paying living wages
- ▶ Opportunities for income
- ▶ Financial security
- ▶ Wealth-building opportunities

Share of adults ages 25 to 54 who are employed

Pay on an average job compared with cost of living

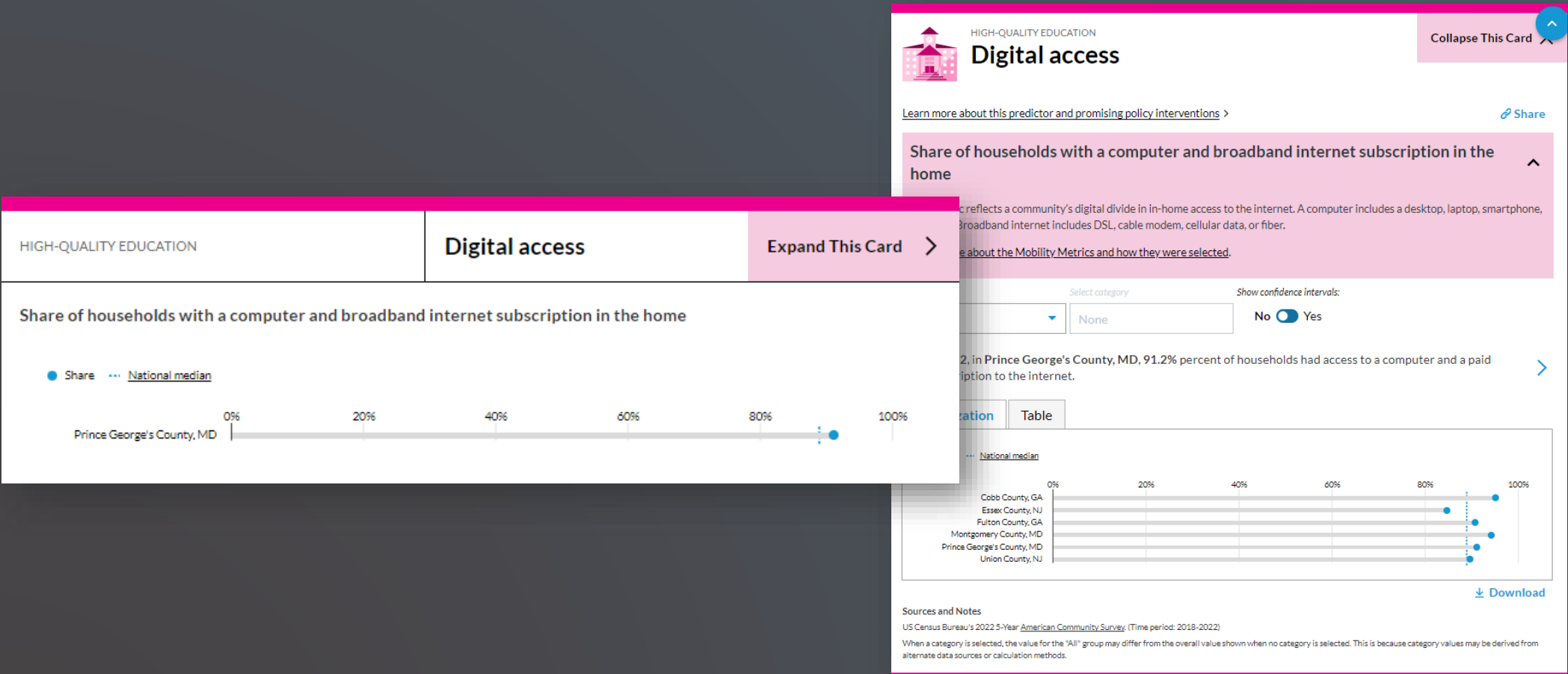
Household income at 20th, 50th, and 80th percentiles

Share of adults with debt in collections

# The Mobility Metrics



# The Upward Mobility Data Dashboard



## Search for specific communities

**Select between 1 and 6 communities**

Search for any county or any city with a population greater than 75,000 in the US.

**Select predictors or pillars**

Select predictors or pillars from the menu below to see the data.

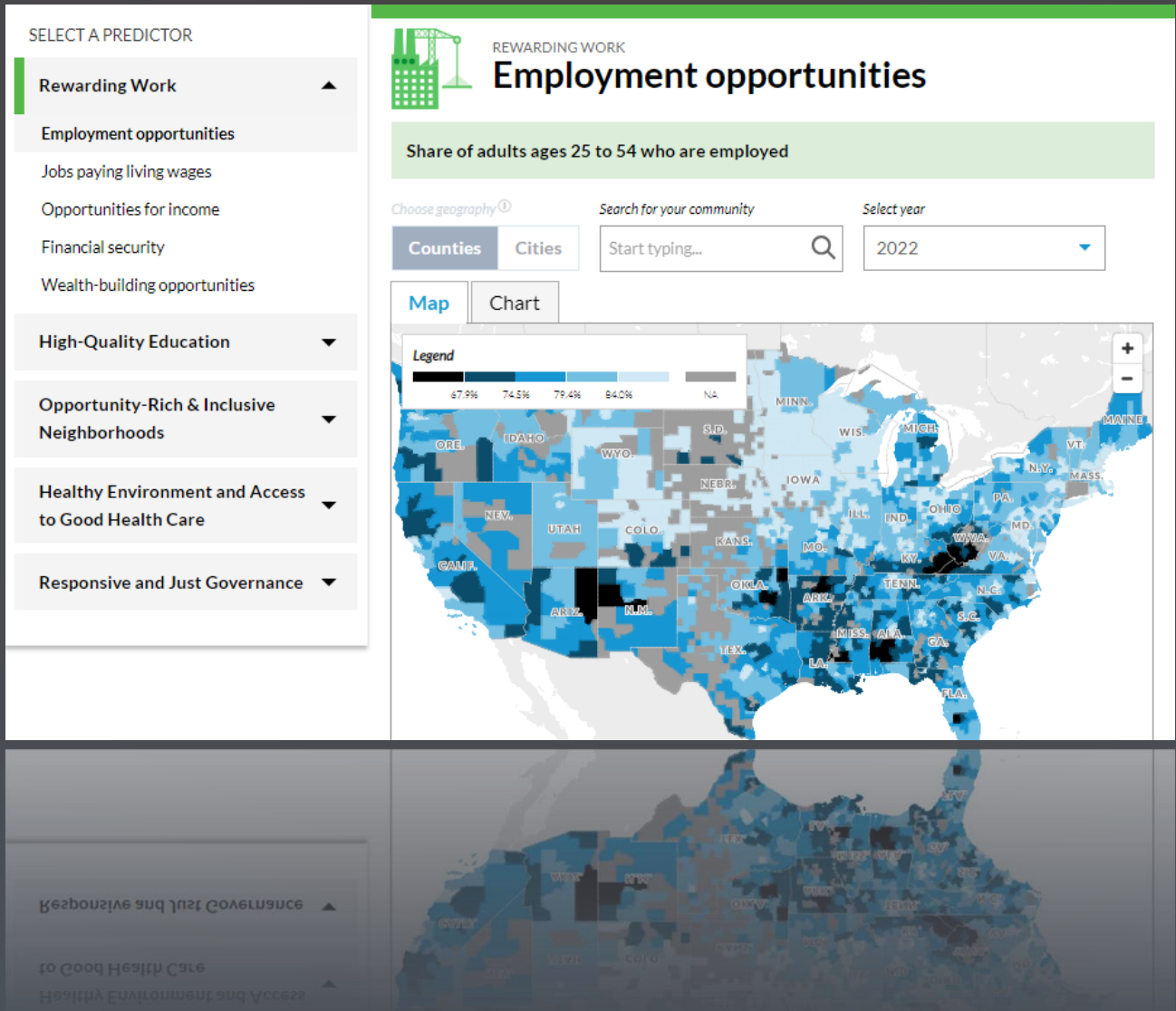
Selected predictors: 24 / 24

- Rewarding Work (5 / 5)
- High-Quality Education (5 / 5)
- Opportunity-Rich & Inclusive Neighborhoods (6 / 6)
- Healthy Environment and Access to Good Health Care (4 / 4)
- Responsive and Just Governance (4 / 4)

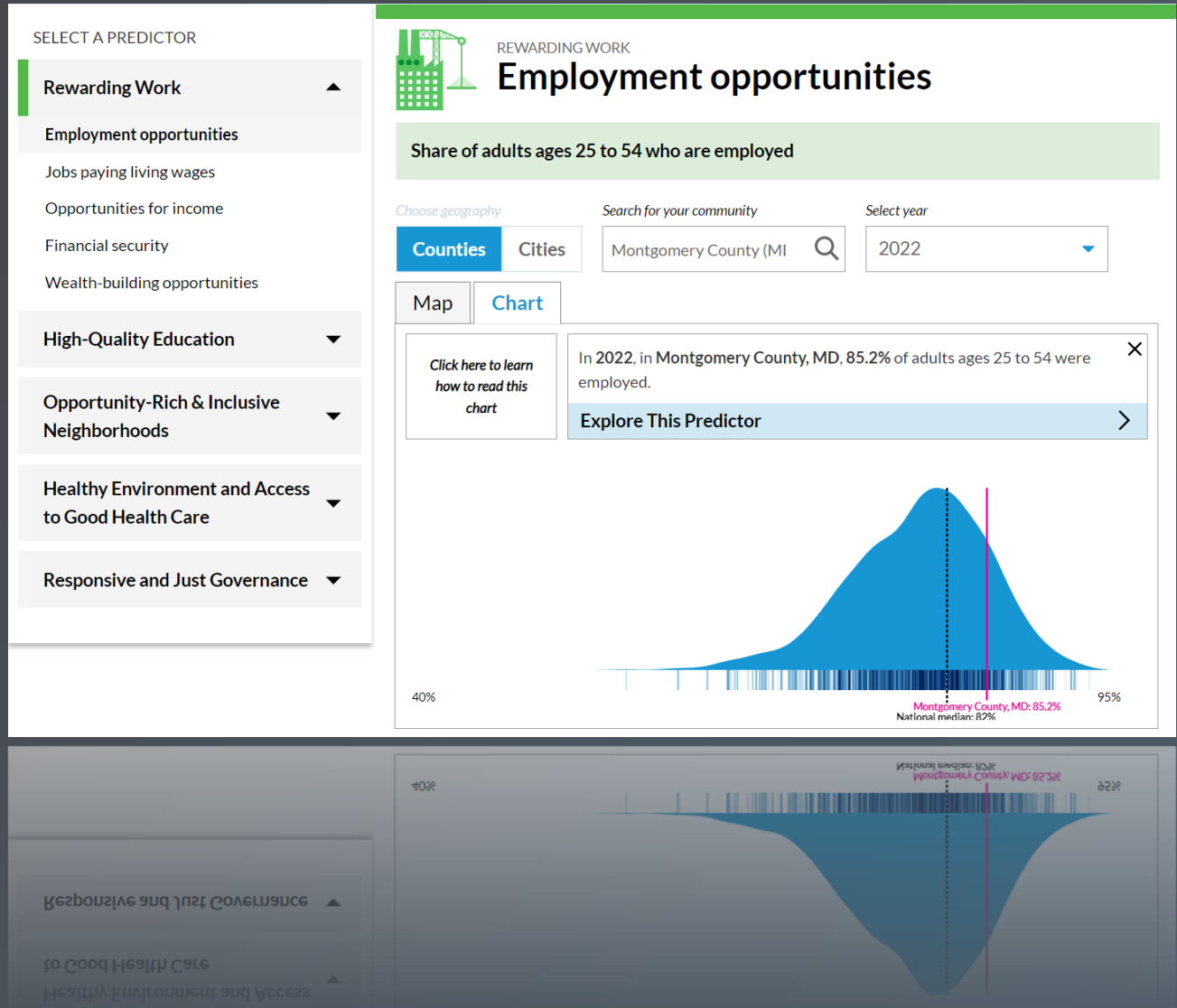
Don't see your city? [Learn how to access data for smaller cities](#)

SEARCH

## Investigate regional trends



## Explore national distributions



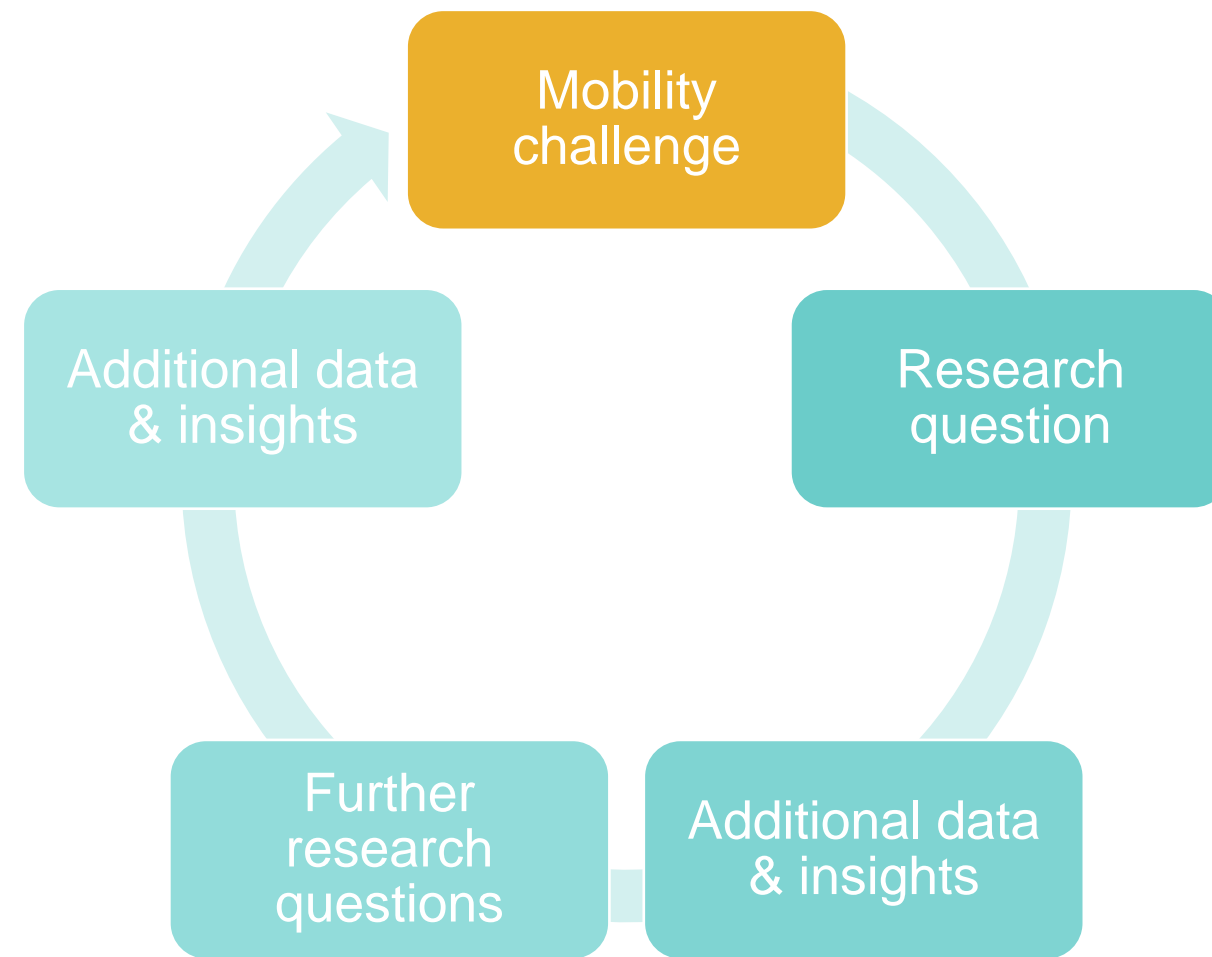


<https://upward-mobility.urban.org/dashboard>





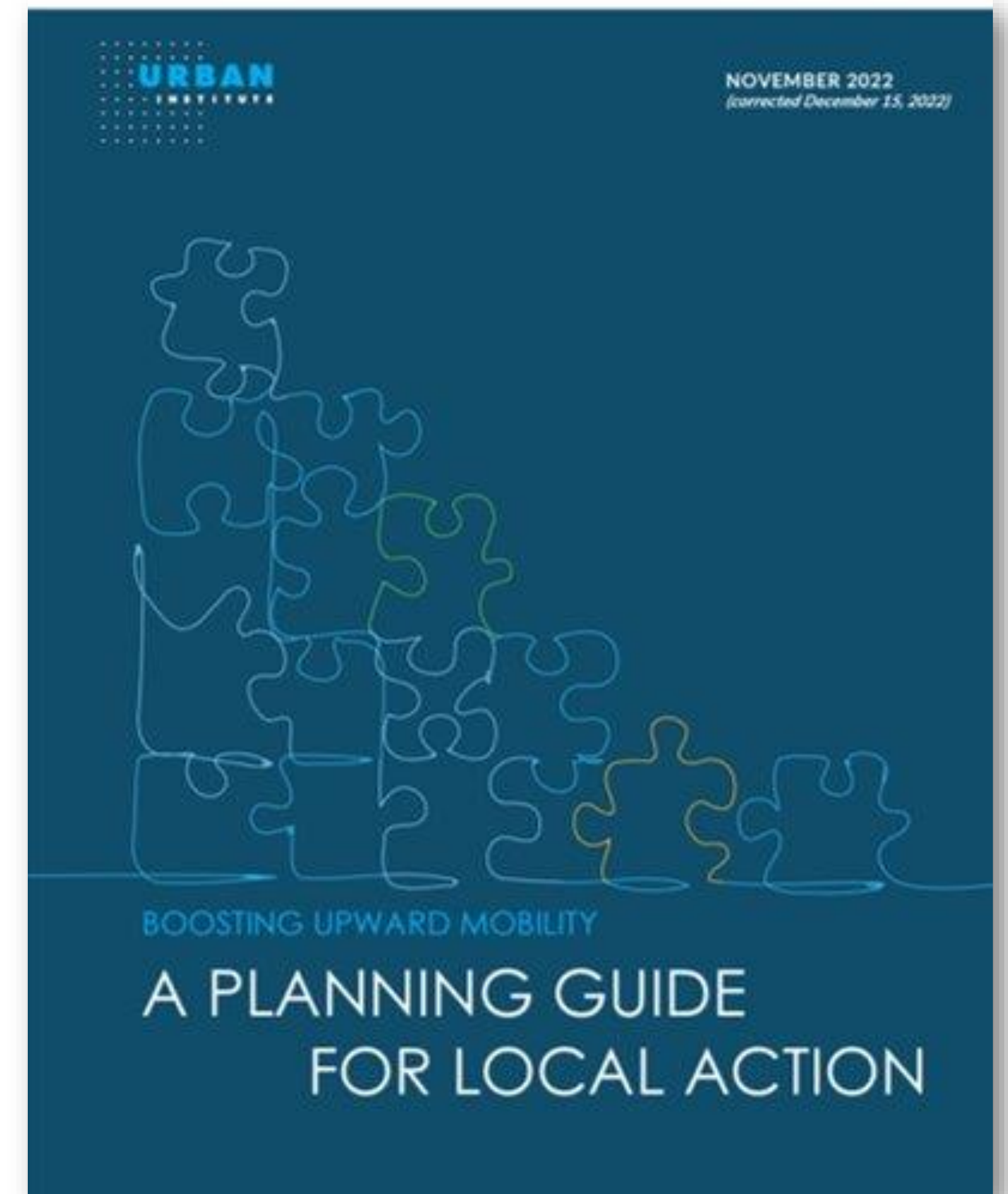
# Iterate on research questions





# Upward Mobility Planning Guide

- A guide to help local leaders better understand **impediments to upward mobility** and how to build a **cross-sector team** that can plan, advocate for, and implement a **set of systems changes**.
- Provides practical advice for people driven to boost mobility from poverty and asking, “**Where do I start?**”
- Informed by the **Boosting Upward Mobility cohort** that beta-tested the metrics.









Review Mobility  
Metrics as a  
Coalition

Identify and Collect  
Supplemental Data

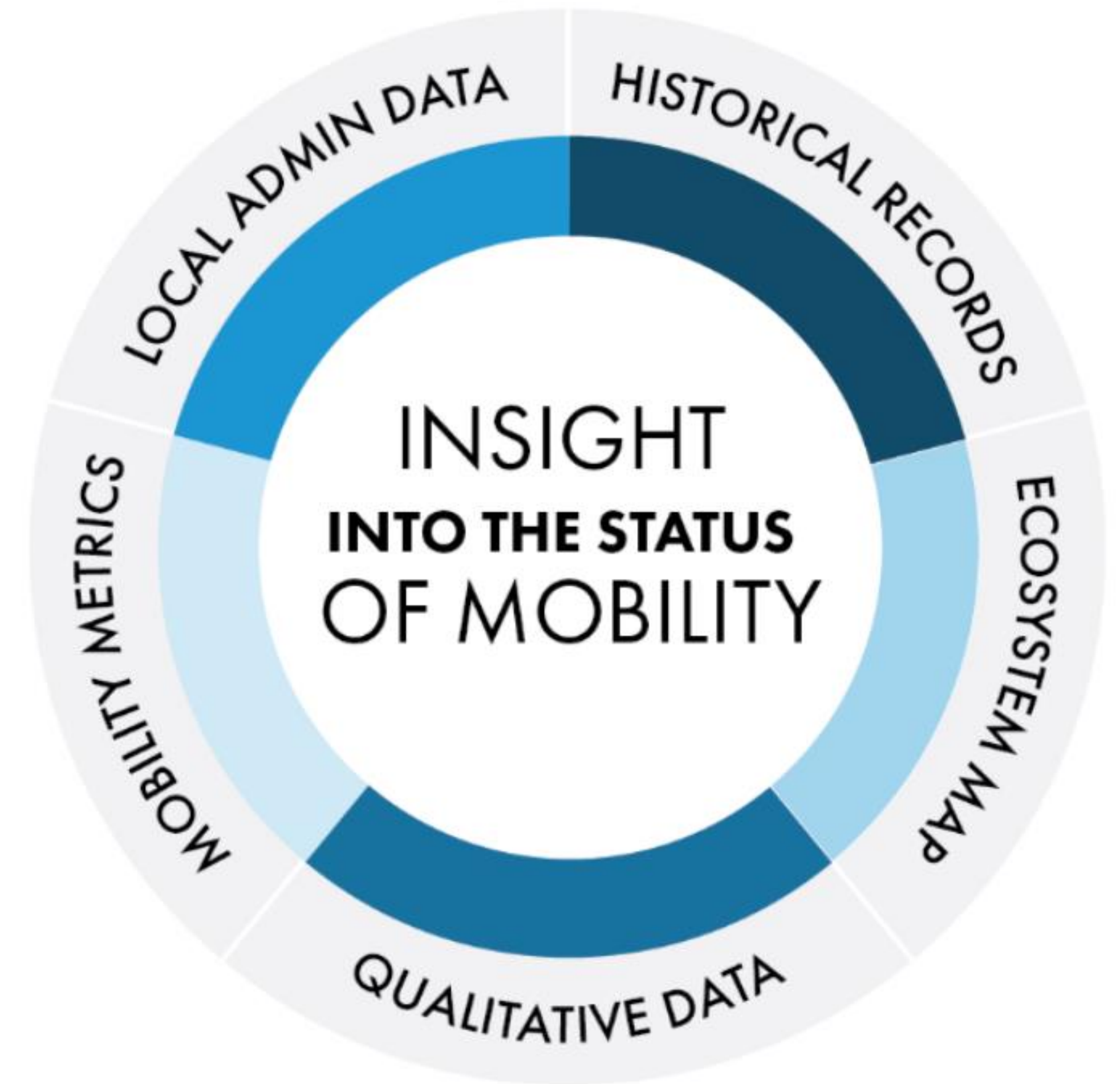
Analyze  
Supplemental Data

Engage Key  
Partners

Develop a Baseline  
Understanding

# Supplementing with Local Data

- Mobility Metrics as a starting point
  - Predictors as a guiding mechanism
- Level of geography
  - National data is not appropriate for measuring or tracking neighborhood programs
- Collection & reporting
  - Frequency and contemporaneous tracking
- Identify underlying causes
  - Local data can offer more metrics & insights





Qualitative  
Information from  
Community  
Engagement

Intervention  
Inventory

Ecosystem Mapping

Additional Local  
Administrative Data

Narrative Power  
Analysis

Historical Records

Program Evaluations

# Example Tool: Data Interactives

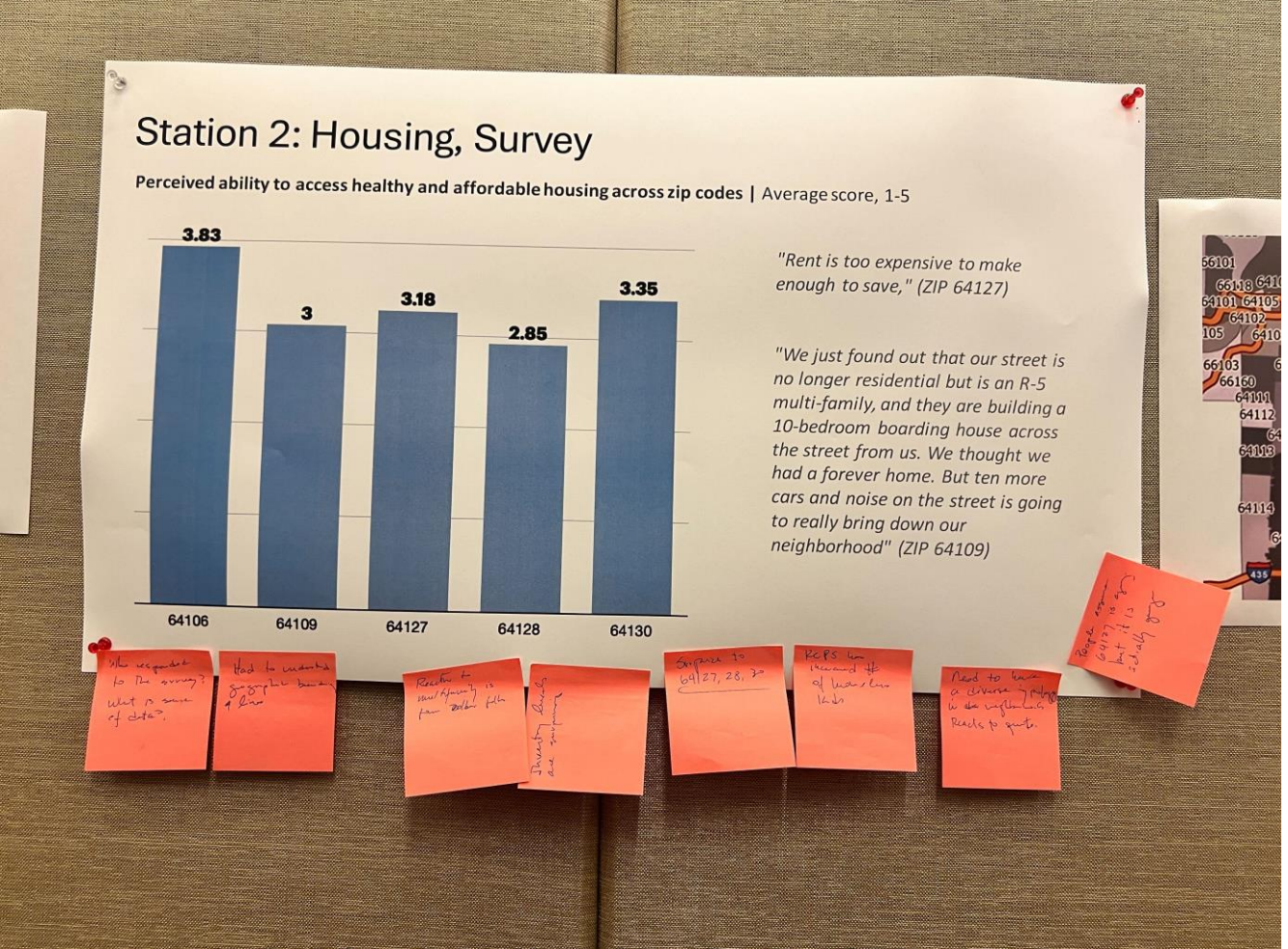
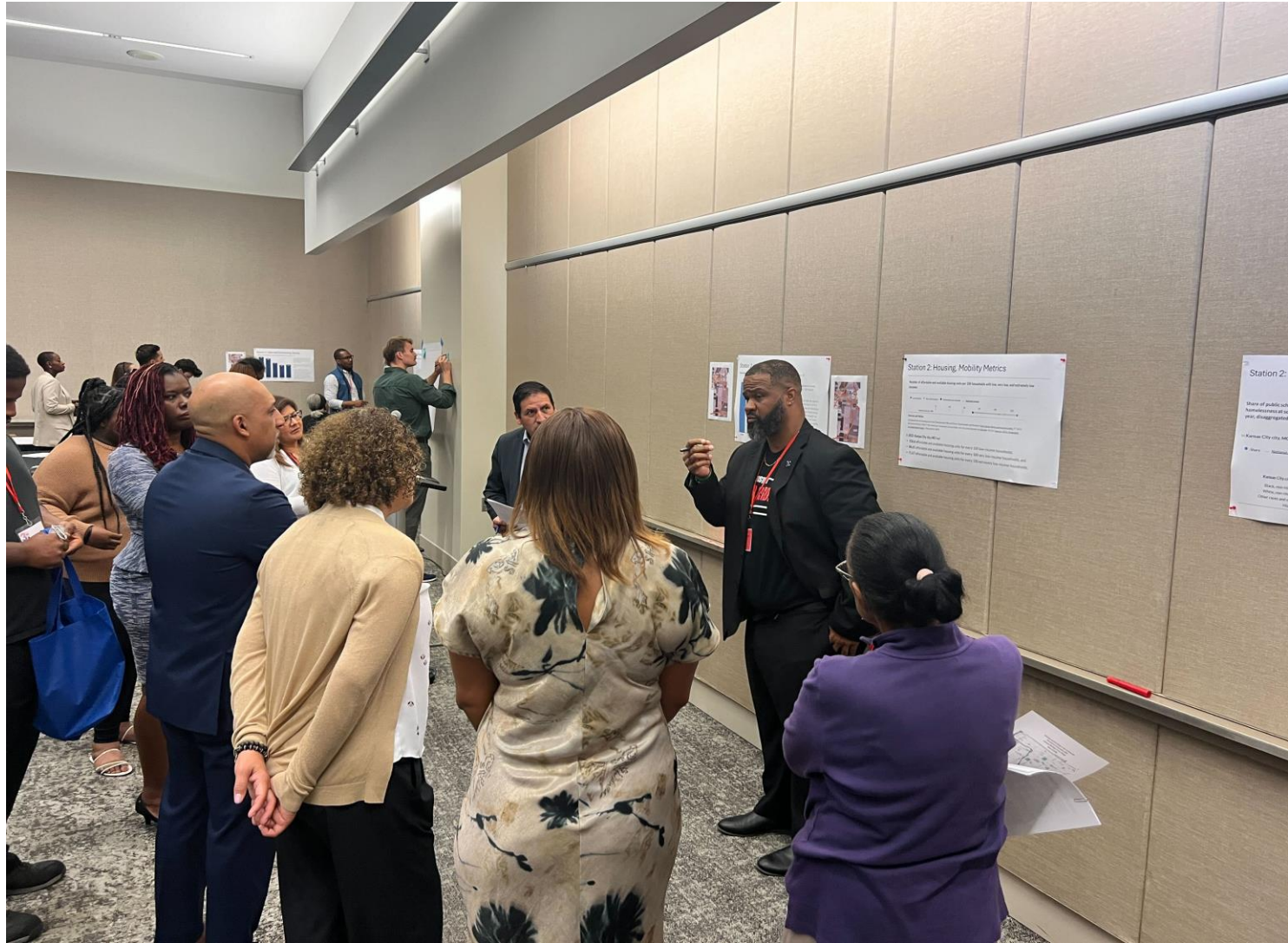
- Sharing data in a **museum gallery format, in small groups**, with discussion questions to guide conversation within stations.
- Include **various forms of “data”** – tables, maps, images, and quotes.
- Ends with a **visioning station** for establishing commitments.



See Urban Institute's [Data Walks: An Innovative Way to Share Data With Communities](#)



Click to edit Master title style





# Resources from the Upward Mobility Initiative

## The Upward Mobility Framework

- [Restoring the American Dream](#): What Would It Take to Dramatically Increase Mobility from Poverty?
- [The Upward Mobility Framework](#)
- Boosting Upward Mobility: [Metrics to Inform Local Action](#) (first edition)
- [Upward Mobility Virtual Workshop](#): Overview
- Evidence Resource Library [forthcoming]

## Using the Mobility Metrics and other local data

- [Upward Mobility Data Dashboard](#)
- [Data Catalog](#) and [GitHub](#)
- [Upward Mobility Virtual Workshop](#): Mobility Metrics
- [Upward Mobility Data Dashboard Appendix](#)
- [Six Ways to Use the Mobility Metrics](#)
- [How to Examine Your Mobility Metrics](#)
- [Obtaining More Local Data](#)

## Strategies for increasing upward mobility

- Boosting Upward Mobility: [Exemplars](#) (examples of successful programs)
- [Boosting Mobility and Advancing Equity Through Systems Change](#)
- Boosting Upward Mobility: [A Planning Guide for Local Action](#)
- [Mobility Action Plans](#) from the Upward Mobility Cohort
- [Creating Mobility from Poverty: An Overview of Strategies](#)
- [Promising Local Policy Interventions](#)
- [Upward Mobility Virtual Workshop](#): Local Action



# Resources from partner organizations

- Opportunity Insights' [Opportunity Atlas](#) and [Social Capital Atlas](#)
- Results for America's [Economic Mobility Catalog](#)
- Stanford SPARQ's [Measuring Mobility Toolkit](#)
- Resources from the [Government Alliance on Race and Equity](#)
- Resources from [CFLeads](#)
- Tools and programming from the [ICMA](#)

Questions? Thoughts?

You can also email us at  
[iguzman@urban.org](mailto:iguzman@urban.org) or [tchelidze@urban.org](mailto:tchelidze@urban.org)

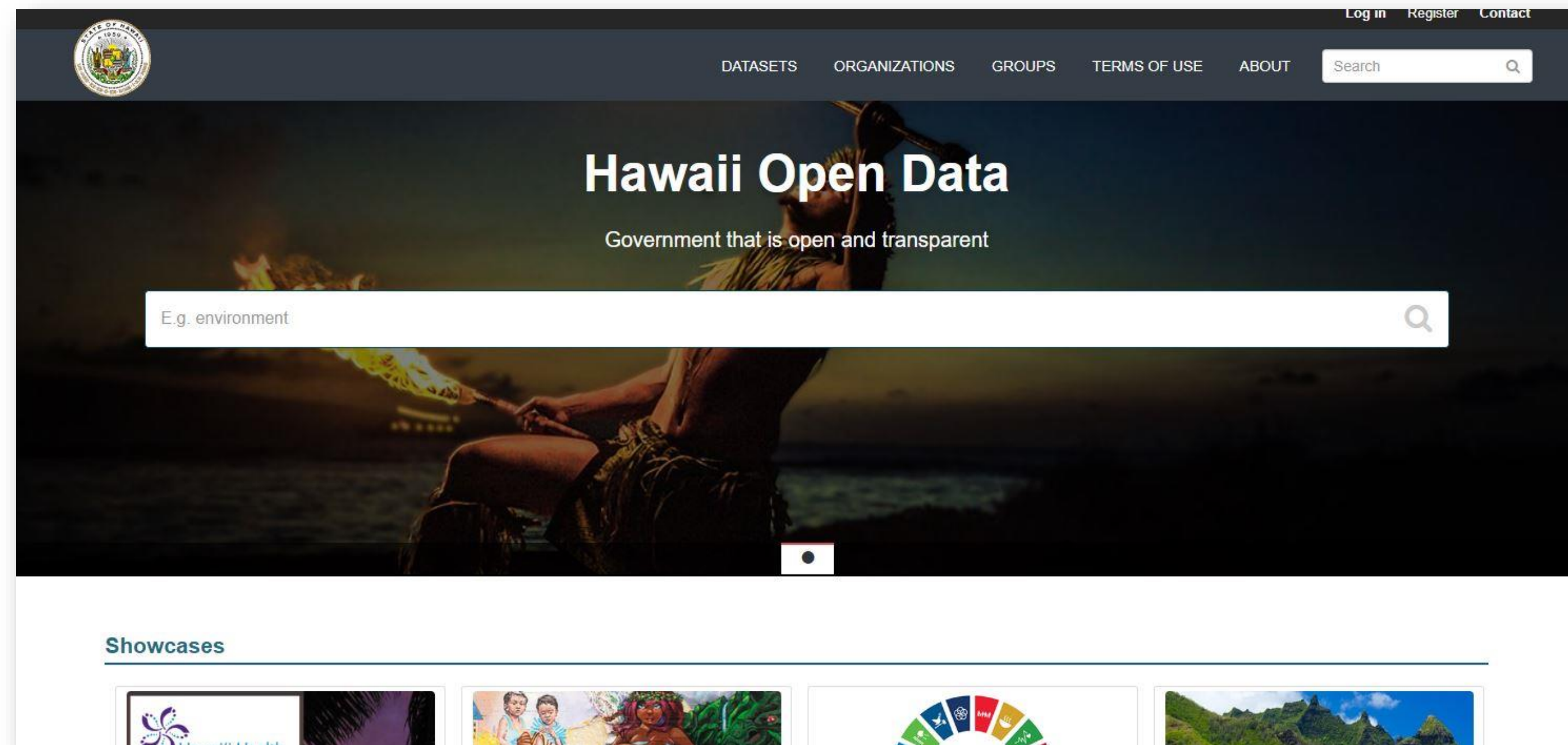




# External Data Resources slides



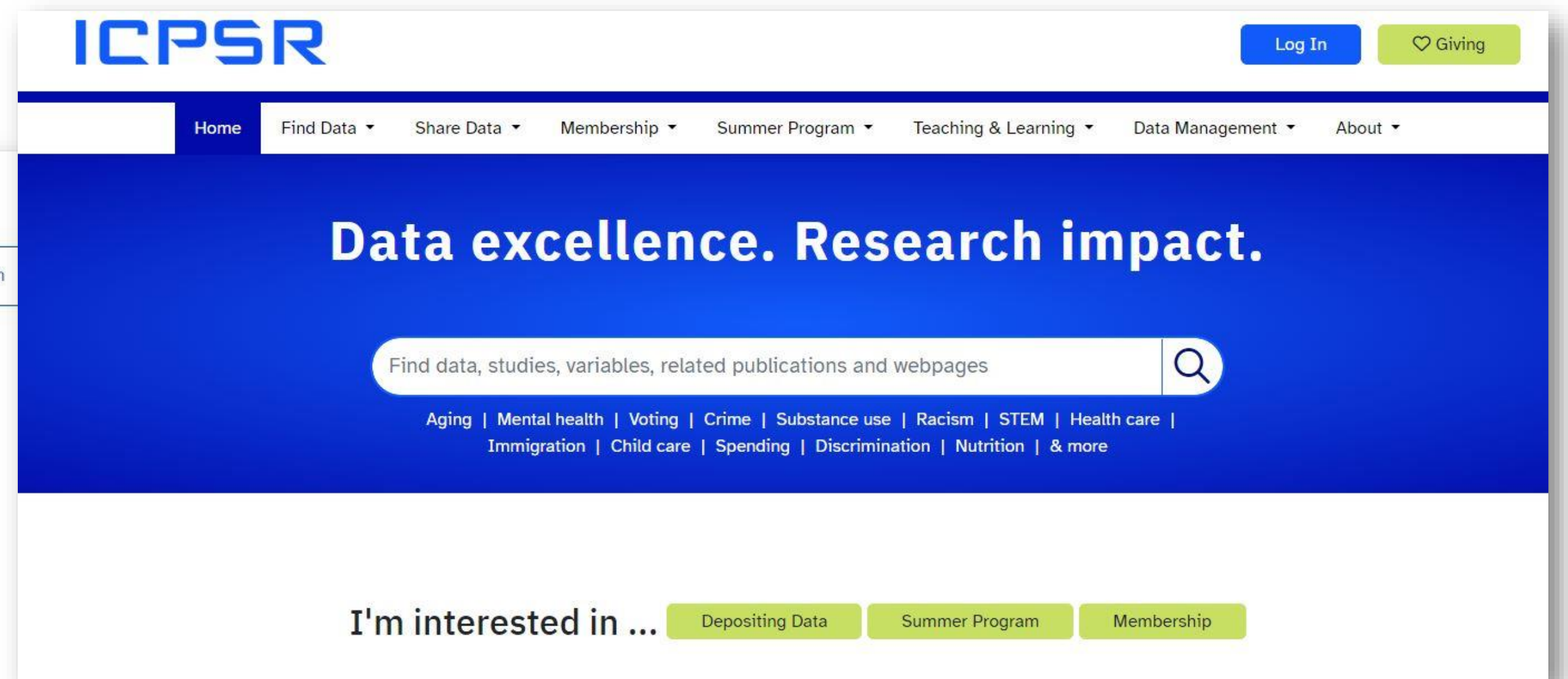
- Local Government Departments & OpenData.org



<https://opendata.hawaii.gov/>



- Data Archiving Sites



<https://www.nber.org/research/data?page=1&perPage=50>; <https://www.icpsr.umich.edu/web/pages/>

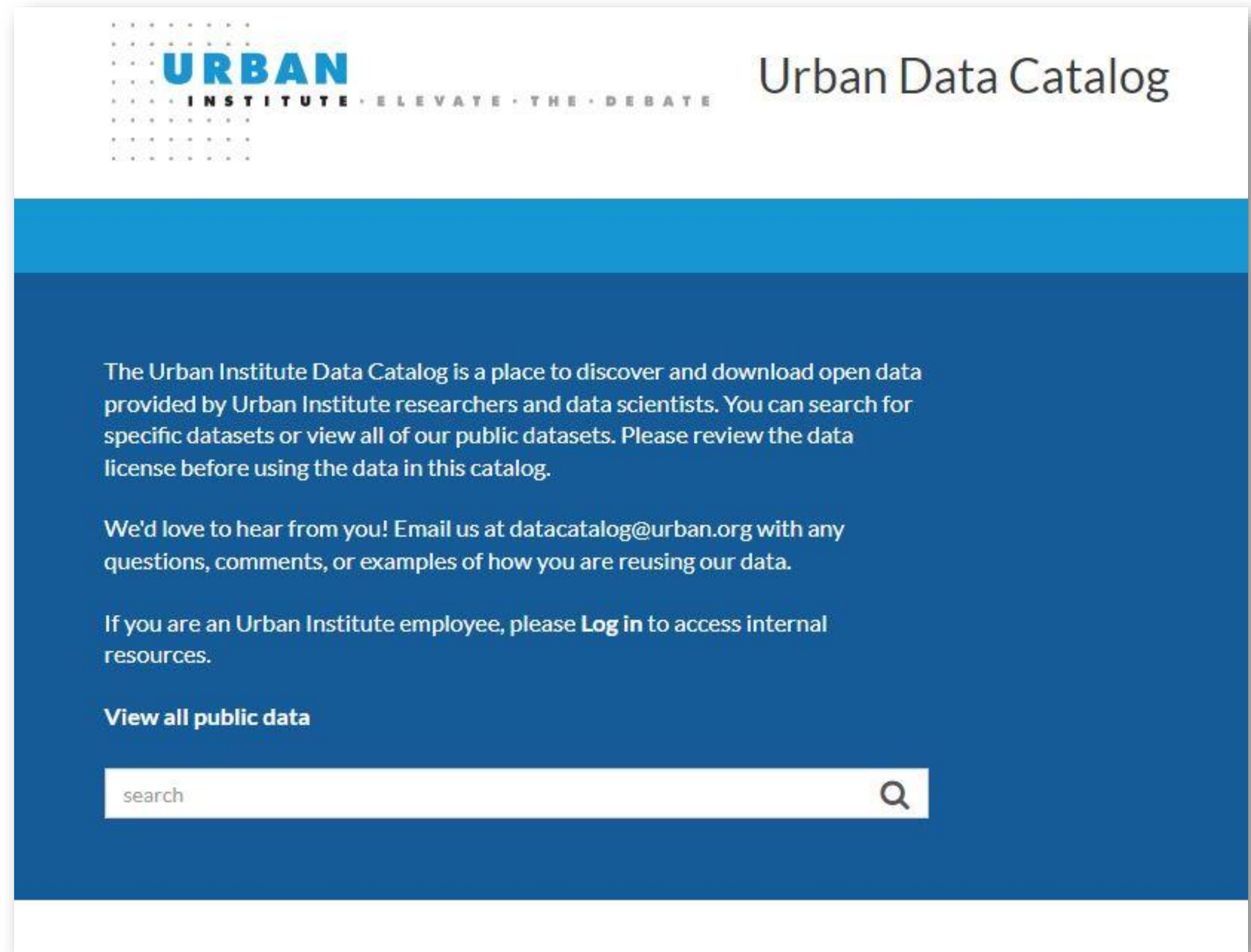
- Public project repositories
  - GIS databases
  - Tableau Projects
  - GEOCORR
  - GitHub

<https://www.tableau.com/community/community-projects>



- University and Research Organization Public Data Catalogues

<https://datacatalog.urban.org/>



- Public Records Requests
  - Can get data that holder would otherwise not provide, but can be time consuming and difficult to obtain
- Data Use/Sharing Agreements
  - Can be faster than a public records request and means a relationship with the provider to ensure understanding of the data, but requires data holder to agree



When is a DSA appropriate?

- Appropriate to set up relationship between institutions (i.e. nonprofits, government agencies, universities, other data intermediaries)
- A formal agreement is needed to prevent against data misuse, data abuse, and unregulated data dissemination.
- Needed to clearly outline key elements like purpose and intended use, timing and update frequency, data stewardship, permissible use, publication and dissemination, etc.

## PROS

- Can connect individual records from one system to another (e.g., education to child welfare system) and track people over time.
- Can allow you to see if an intervention works.
- DSAs can facilitate collaboration and coordination.
  - Can have major long-term benefits
  - You can only do so much with siloed data
  - Collaboration builds trust



## CONS

- DSAs take a long time to secure.
  - May require a county council/other entity's approvals.
  - Need to be regularly approved.
  - Can take time to receive data.
  - Once you receive data, it can have a lot of nuances that require intimate familiarity.
  - Some data points are better quality than others.
  - May need staff dedicated to handle the data.
- Need systems for proper data storage and privacy, sustainability, & safe data transfer.

# Leverage Local Data

<https://upward-mobility.urban.org/mobility-metrics/local-data>



## Obtaining More Local Data

The [Mobility Metrics](#) are signals of communities' strengths and areas for growth related to upward mobility. However, on their own, they don't give local leaders a complete picture of the systems that uphold or undermine mobility in a community and their disparate effects on different groups of residents.

This resource helps communities get a clearer picture by offering other state and local data sources that can be combined with the metrics for more robust insights into their mobility conditions.

Explore additional data sources for each of the 24 pillars in the [Upward Mobility Framework](#) in the catalog below. Read the text that follows to learn more about the importance of disaggregating data and best practices for identifying reliable local data.



# Analyze Data: Mobility Metrics GitHub

<https://github.com/UI-Research/mobility-from-poverty>



GitHub repository interface for **UI-Research / mobility-from-poverty** (Public).

Navigation: Code | Issues (21) | Pull requests (1) | Actions | Projects | Wiki | Security | Insights

Branches: main | 4 Branches | 1 Tags

Search: Go to file

Commit: 3e3c140 · 2 days ago | 2,154 Commits

Commit	Message	Time
awunderground	Merge branch 'version2024' ✓	3e3c140 · 2 days ago
	Merge pull request #200 from UI-Research/jen	last week
	Merge pull request #377 from UI-Research/iss371	3 weeks ago
	Merge pull request #318 from UI-Research/iss204	6 months ago
	Remove extra variable	5 months ago
	Add na.rm = TRUE speciation to summaires to avoi...	3 weeks ago
	Fixed variable subgroup labels and variable order	6 months ago
	Update subgroup titles	4 months ago
	Update subgroup titles	4 months ago

<https://datacatalog.urban.org/dataset/mobility-metrics-data-upward-mobility-framework>



View

Revisions

Mobility Metrics Data for the Upward Mobility Framework

Adolescents and Youth

Children

Gender and Sexuality

Income and Wealth

Job Market and Labor Force

Poverty, Vulnerability, and the Safety Net

Race and Ethnicity

Education and Training

Crime and Justice

Neighborhoods, Cities, and Metros

f

X

in

✉

DATA AND RESOURCES BLOCK

CSV

11\_mobility-metrics\_county\_longitudinal.csv ( Sep 10, 2024 )

↓

CSV

12\_mobility-metrics\_county\_race-ethnicity\_longitudinal.csv ( Sep 10, 2024 )

↓

CSV

13\_mobility-metrics\_county\_race-share\_longitudinal.csv ( Sep 10, 2024 )

↓

CSV

14\_mobility-metrics\_county\_income\_longitudinal.csv ( Sep 10, 2024 )

↓

CSV

15\_mobility-metrics\_county\_age\_longitudinal.csv ( Sep 10, 2024 )

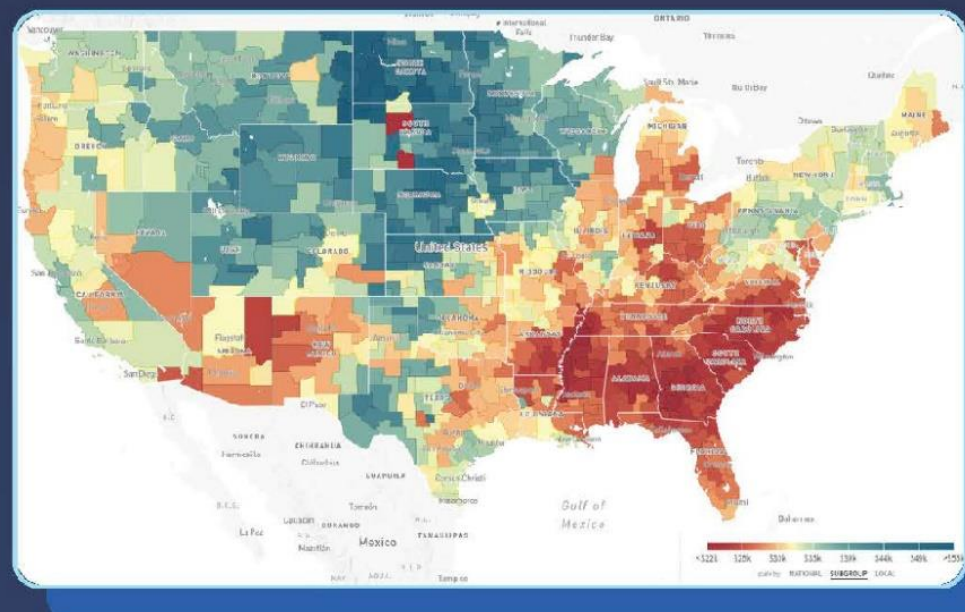
↓



# Explore Opportunity, Define Priorities, Find Solutions

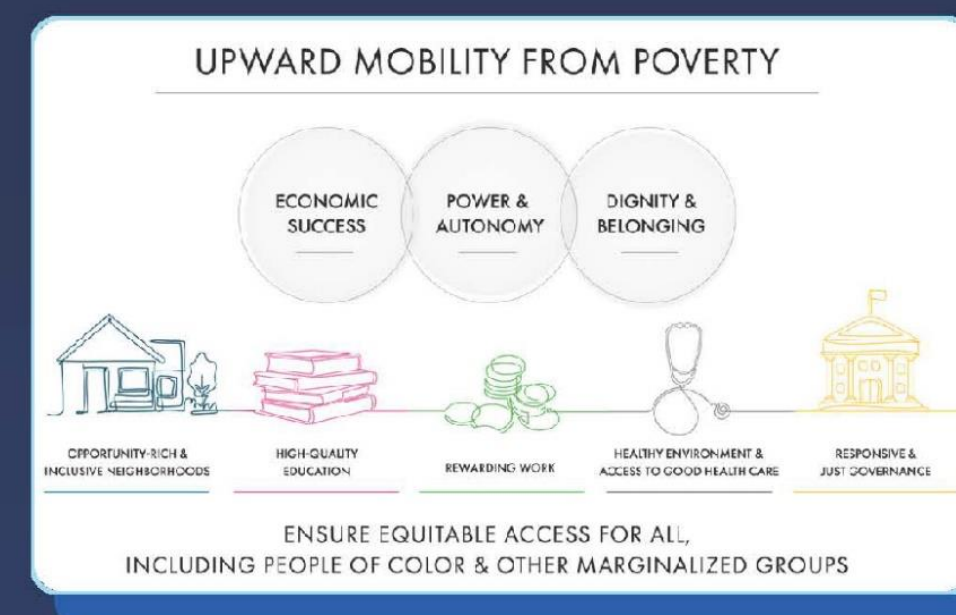
**Three resources, one goal:** Helping local leaders improve upward mobility for their residents. Used together, the Opportunity Atlas, the Upward Mobility Framework, and the Economic Mobility Catalog can address barriers and advance equity in municipalities across the country.

## OPPORTUNITY ATLAS



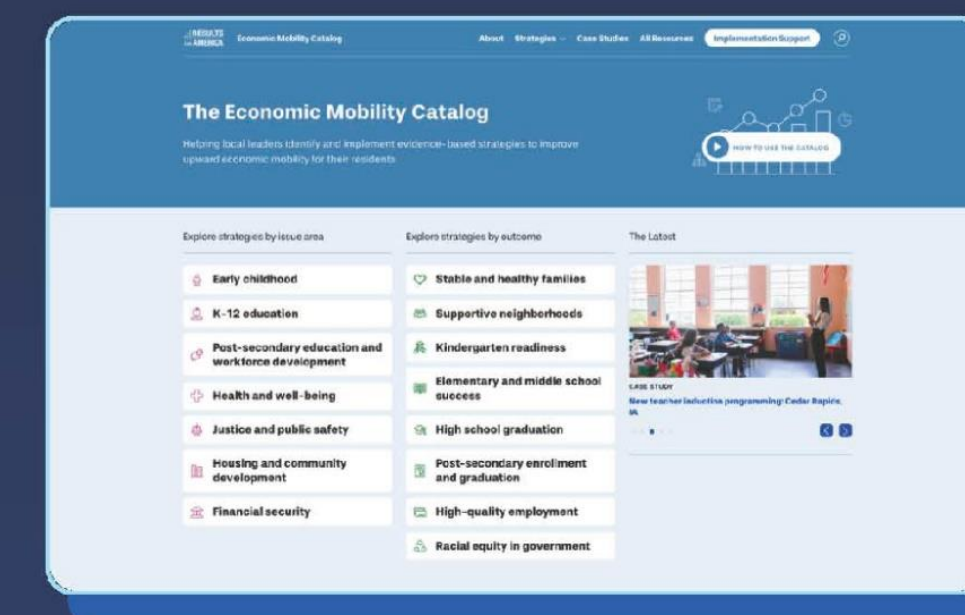
Use Opportunity Insights' Opportunity Atlas to explore the national landscape of economic mobility by Census tract, and to see outcomes by parental income, race, and gender.

## UPWARD MOBILITY FRAMEWORK



Use the Urban Institute's Upward Mobility Framework to assess and make progress on the conditions that affect upward mobility and racial equity in communities.

## ECONOMIC MOBILITY CATALOG



Use Results for America's Economic Mobility Catalog to identify and implement hundreds of evidence-based approaches to advancing upward mobility.





### **Join the Economic Mobility Peer Network**

The Economic Mobility Peer Network (EMPN) is the premier network for economic mobility leaders!



### **Complete Our Survey**

We want to hear from you! Share what you learned, desired learning opportunities, and more!



### **Promote Economic Mobility Efforts**

Economic mobility requires champions like you! Leverage the tools and resources to make your case!

# **Wrap Up & Next Steps**





Thank You



NLC